

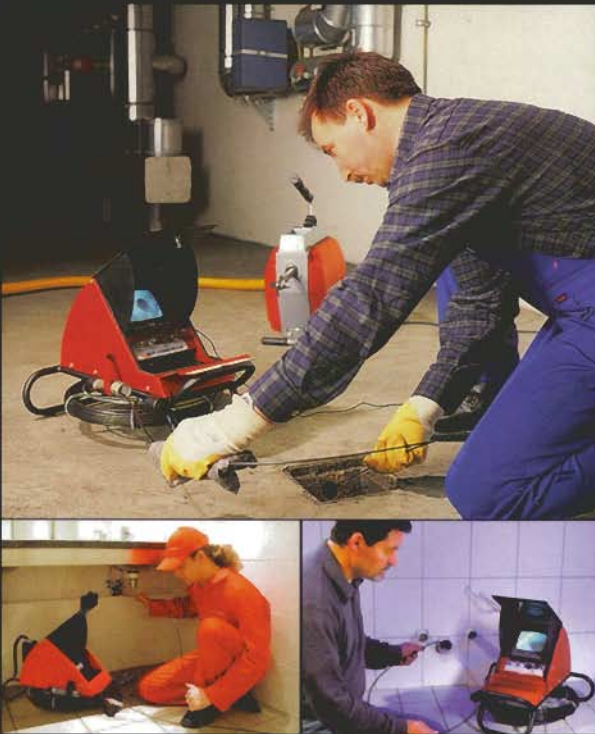
ROCAM[®] mobile
Pipe & Drain
Inspection Camera
System



ROTHENBERGER

PROFESSIONAL TOOLS AT WORK

Use anywhere you need an inside look at breaks, leaks or obstructions

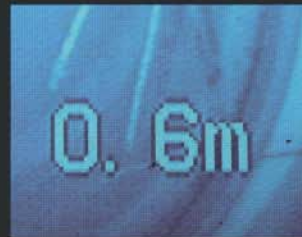


- Drain & Sewer Lines
- Clean Outs & Vent Stacks
- Septic Lines & Tanks
- Floor Drains
- Steam Lines
- Pools
- Wells
- Conduit
- Ducts
- And More!

Optional Accessories



Locating System utilizes a transmitter located in the camera head along with a hand receiver. The receiver emits audible signal strength readings to help you locate camera position in uncharted plumbing. The transmitter's magnetic signals can be detected through concrete, brick and even cast iron pipe.



On-Screen Distance Counter indicates length of push rod feed, helping you identify where the problems are and speed your way to an efficient solution.



ROCAM® Mini Module allows inspection of 1-3/4" traps and pipe with multiple bends. Offered in a choice of color or B/W, the 1" diameter camera comes with 16.5 ft of 1/8" flexible push rod and can be used with any ROCAM® mobile system.



Reinforced Push Cable provides strain relief where the push cable enters the camera head to allow flexibility and prevent breakage.

Get Right To The Solution

with ROCAM® mobile vision

Whether this is your first camera or you are upgrading to a system with transmitter/locator functions and other enhanced capabilities, the ROCAM® mobile system provides everything you need in a small, rugged package.

All units are easy to transport and use. Just position the compact frame near the pipe or drain, open the sunlight visor and begin advancing the camera from its free-running reel. The highly flexible push rod and camera head negotiate tight turns with ease. Adjust for camera LED brightness and continue advancing until you locate the problem area. Then save your inspection images on a VCR or notebook PC using the optional connectors which store conveniently along with other accessories in a built-in compartment.

Battery status indicators give you ample warning to recharge or seek an AC source. You can use the unit's on-board battery charger or keep extra batteries topped off with an available external charger.

Put one on every truck!

These compact video inspection systems expand your plumbing and mechanical services with the highest quality German engineered optics to help you diagnose problems fast. Select from black and white or color units, with or without locator functions, to tailor a system to your exact needs.

System Features

- Up to 2.5 hours of battery operation per charge or 115 VAC continuous service.
- Easy grab-and-go portability — each compact unit is supplied with 5" monitor, sun visor, carrying frame, 18 V/1.4 Ah battery, built-in charger, 115 ft. push rod and camera head.
- Inspect pipe up to 6" diameter with the standard cameras or add the 1" diameter Mini Module for smaller pipe, conduit work and inspections involving traps or multiple bends.
- Variable illumination LED lighting produces brilliant images in any conditions.
- Capture your inspections on VCR or on your PC with available USB connectors.
- Locate underground lines and assess their condition easily with the optional hand-held locator and on-screen distance counter.
- All units are housed in tough, impact-resistant ABS plastic with steel frame.

Side-By-Side Comparison

ROCAM® mobile	Model Number	Monitor and Camera	18V/1.4A and AC	Integrated Charger	Battery Status Indicator	ABS Plastic Housing	115 Ft. Flexible Push Rod	On-Screen Distance Counter	Locating System
Basic System	69420NT	5" Monochrome	•	•	•	•	•		
System w/Counter and Locator	69430NT	5" Monochrome	•	•	•	•	•	•	•
	69530NT	5" Color	•	•	•	•	•	•	•

Specifications

Video input:	RCA 1 kohms
Video output:	RCA 75 ohms
Power consumption:	550 mA
Working temperature:	14°F to 122°F -10°C to + 50°C
Storage temperature:	-22°F to 122°F -30°C to + 50°C
Dimensions (L x W x H):	20 x 16.5 x 14.5 in.
Weight inc. battery:	28.7 lbs.
Monitor (B/W):	Monochrome display screen 5.5 in.
Monitor (Color):	Color display screen TFT 6.4 in.
Camera module (B/W):	Type EIA
Camera module (Color):	Type CMOS color NTSC
Camera head diameter:	1.3 in.
Reel cable length:	115 ft.
Reel cable diameter:	0.18 in.
Battery voltage:	18 V
Battery capacity:	1.4 Ah
Battery operational working time:	2.5 hrs.
Drain capacity:	2 to 6 in.
Drain capacity (mini module):	1.5 to 4 in.

Ordering Information

Camera Packages

	Description	Model
	ROCAM® <i>mobile</i> B/W Camera System	69420NT
	ROCAM® <i>mobile</i> B/W Camera System with On-Screen Distance Counter and Locating System	69430NT
	ROCAM® <i>mobile</i> Color Camera System with On-Screen Distance Counter and Locating System	69530NT

Camera Accessories

	Guide Skids (Star Type) 2 pcs.	H82306
	Guide Skid (Ball Type)	74628
	B/W Camera Head Unit	69100NT
	Color Camera Head Unit	69205NT
	Replacement Coiled Push Rod 115 ft.	69080
	ROCAM® Mini Module B/W Camera set with 16-1/2' of 1/8" push rod	69300NT
	ROCAM® Mini Module Color Camera set with 16-1/2' of 1/8" push rod	69350NT
	Replacement Battery	H88950
	External Charger	H88953
	USB Connection Kit	H069560