

ROTHENBERGER

ROMAX® AC ECO



www.cscindustrial.com
Ph: 1-866-496-7268
Fax: 1-915-760-4832
5970 Silver Springs Dr.
El Paso, TX 79912

1.5705



R

Technical data / Applications

Rated power consumption	280 W
Motor speed	14000 rpm
F max	32 kN
Compression time	approx 6 s (depending on nominal size)
Dimensions (LxWxH)	410x80x170 mm
Weight	5 kg
Working range:	
Metal systems	Diameter 12-54 mm
Plastic systems	Diameter 12-63 mm
Application temperature range	0-40 °C
Protection type	IP 20
Operating mode	S3
Typical acceleration in the hand-arm area	2.5 m/s ²
Typical A-rated noise level:	
Noise level	71 dB (A)
The noise level during operation can exceed 85 dB (A). Wear ear protection.	
Measurements found in compliance with EN 50 144.	

Proper usage

The ROMAX® AC ECO is designed exclusively for the use of compression jaws manufactured by ROTHENBERGER or that have been declared suitable by ROTHENBERGER, for example the products available from MAPRESS, Viega, Geberit, Uponor, etc.

The device and the compression jaws are designed exclusively for compressing pipes and fittings, for which the corresponding compression jaws have been designed. Any other or additional use shall be deemed improper.

ROTHENBERGER cannot accept any liability for the resultant consequences and damage, nor for the use of compression jaws from other manufacturers, nor for damage caused by these compression jaws.

Proper usage also includes compliance with the operating manual, compliance with the inspection and servicing conditions and adherence to all the relevant safety regulations.

The ROMAX® AC ECO is a hand-held electric machine and must not be used for stationary applications.

This device may only be used correctly as described.

General Safety Rules

WARNING! Read all instructions. Failure to follow all instructions listed below may result in electric shock, fire and/or serious injury. The term "power tool" in all of the warnings listed below refers to your mains operated (corded) power tool or battery operated (cordless) power tool.

SAVE THESE INSTRUCTIONS.

1) Work area

- Keep work area clean and well lit.** Cluttered and dark areas invite accidents.
- Do not operate power tools in explosive atmospheres, such as in the presence of flammable liquids, gases or dust.** Power tools create sparks which may ignite the dust or fumes.
- Keep children and bystanders away while operating a power tool.** Distractions can cause you to lose control.

2) Electrical safety

- Power tool plugs must match the outlet. Never modify the plug in any way. Do not use any adapter plugs with earthed (grounded) power tools.** Unmodified plugs and matching outlets will reduce risk of electric shock.
- Avoid body contact with earthed or grounded surfaces such as pipes, radiators, ranges and refrigerators.** There is an increased risk of electric shock if your body is earthed or grounded.
- Do not expose power tools to rain or wet conditions.** Water entering a power tool will increase the risk of electric shock.
- Do not abuse the cord. Never use the cord for carrying, pulling or unplugging the power tool. Keep cord away from heat, oil, sharp edges or moving parts.** Damaged or entangled cords increase the risk of electric shock.
- When operating a power tool outdoors, use an extension cord suitable for outdoor use.** Use of a cord suitable for outdoor use reduces the risk of electric shock.

3) Personal safety

- Stay alert, watch what you are doing and use common sense when operating a power tool. Do not use a power tool while you are tired or under the influence of drugs, alcohol or medication.** A moment of inattention while operating power tools may result in serious personal injury.
- Use safety equipment. Always wear eye protection.** Safety equipment such as dust mask, non-skid safety shoes, hard hat, or hearing protection used for appropriate conditions will reduce personal injuries.
- Avoid accidental starting. Ensure the switch is in the off position before plugging in.** Carrying power tools with your finger on the switch or plugging in power tools that have the switch on invites accidents.
- Remove any adjusting key or wrench before turning the power tool on.** A wrench or a key left attached to a rotating part of the power tool may result in personal injury.
- Do not overreach. Keep proper footing and balance at all times.** This enables better control of

the power tool in unexpected situations.

- f) **Dress properly. Do not wear loose clothing or jewellery. Keep your hair, clothing and gloves away from moving parts.** Loose clothes, jewellery or long hair can be caught in moving parts.
 - g) **If devices are provided for the connection of dust extraction and collection facilities, ensure these are connected and properly used.** Use of these devices can reduce dust related hazards.
- 4) Power tool use and care**
- a) **Do not force the power tool. Use the correct power tool for your application.** The correct power tool will do the job better and safer at the rate for which it was designed.
 - b) **Do not use the power tool if the switch does not turn it on and off.** Any power tool that cannot be controlled with the switch is dangerous and must be repaired.
 - c) **Disconnect the plug from the power source before making any adjustments, changing accessories, or storing power tools.** Such preventive safety measures reduce the risk of starting the power tool accidentally.
 - d) **Store idle power tools out of the reach of children and do not allow persons unfamiliar with the power tool or these instructions to operate the power tool.** Power tools are dangerous in the hands of untrained users.
 - e) **Maintain power tools. Check for misalignment or binding of moving parts, breakage of parts and any other condition that may affect the power tools operation. If damaged, have the power tool repaired before use.** Many accidents are caused by poorly maintained power tools.
 - f) **Use the power tool, accessories and tool bits etc., in accordance with these instructions and in the manner intended for the particular type of power tool, taking into account the working conditions and the work to be performed.** Use of the power tool for operations different from those intended could result in a hazardous situation.

5) Service

- a) **Have your power tool serviced by a qualified repair person using only identical replacement parts.** This will ensure that the safety of the power tool is maintained.

Special safety instructions

Never hold your fingers or other body parts in the working area of the cylinder or the compression jaws.

Disconnect the plug from the socket before carrying out any work on the machine.

If the device is so badly damaged that electric cables or drive parts are exposed, disconnect the mains plug immediately and contact your service outlet. Unauthorised repair work may result in the user suffering major injuries or even death.

Only personnel trained in how to use the device may make compressed pipe joints using the ROMAX® AC ECO.

The machine may only be used with a compression jaw inserted into it. The compression jaw must be in perfect technical condition.

Only start the machine if it is in perfect working order.

Servicing and repair work may only be carried out by workshops authorised by Rothenberger.

Use only suitable compression jaws and compression fitting systems that have been approved by Rothenberger Werkzeuge GmbH.

After you have inserted the compression jaw check that the bar is securely locked.

In the event of problems during the compression process, press the EMERGENCY STOP button.

Check that the pipe joint is secure after you have completed the compression process.

Imperfect pipe joints must be compressed again using a new fitting.

Follow the installation instructions supplied by the fitting and pipe manufacturers.

Mains connection

Connect only to single-phase alternating current and only to the mains voltage specified on the rating plate. The machine may also be connected to sockets without an earth contact since it complies with protection class II.



www.cscindustrial.com
 Ph: 1-866-496-7268
 Fax: 1-915-760-4832
 5970 Silver Springs Dr.
 El Paso, TX 79912

To insert the compression jaw**A**

Disconnect the mains plug.

- 1** Open the bar
- 2** Insert the appropriate compression jaw for the job in hand.

3 Lock the bar

Each time you change the compression jaw, carry out a trial compression cycle, check whether the compression jaw closes fully and that the joint is sealed.

To turn the compression jaw**B**

The compression jaw can be turned through 270° depending on the application.

EMERGENCY STOP button**C**

If there is any danger to personnel or the machine during the compression process, press the EMERGENCY STOP button immediately and release the ON switch. The valve will open and the piston will return to its initial position.

To switch on**D**

Press one of the two ON buttons until the compression process has been completed.

Operation**E**

Use only system-compliant compression fittings and compression jaws designed for them. The nominal size of the compression jaw must be identical with the nominal size of the compression fitting.

⚠ When inserting the pipe / compression fitting system, there is a risk of crush injuries for the fingers or other body parts near the compression jaw.

- 1** Push the compression fitting on to the pipe. Pull the compression jaw apart and insert the pipe with the compression fitting at right-angles.
- 2** There must be no foreign bodies between the compression contour and the fitting. If you fail to ensure this, the compression process will not produce a perfect joint.
- 2** Press one of the two ON buttons until the compression cycle has finished, then release the ON button. Ensure that the compression jaws close completely.
- 3** Push the compression jaws apart and take the machine off the joint.

Care and servicing

Disconnect the plug from the socket before carrying out any work on the machine.

Use only high quality compression or ball bearing grease.

Check that the compression are fully functional. Damaged compression jaws must not be used and must be sent to an authorised workshop.

Check that the compression jaws and compression rollers move freely.

Check the bar for signs of damage at regular intervals. Have damaged bars replaced by an authorised workshop.

Clean and grease the compression rollers when you have finished work.

Clean and grease the bar and compression jaws. The compression contour must be kept free of grease.

All other servicing, maintenance and repair work must be carried out by an authorised ROTHENBERGER workshop.

If the seal is damaged the warranty will be null and void.

After 10,000 compression cycles have the machine serviced by an authorised workshop. Send the machine to the workshop in the carry case only.

Disposal

Components of the unit are recyclable material and should be put to recycling. For this purpose registered and certified recycling companies are available. For an environmentalfriendly disposal of the non-recyclable parts (e.g. electronic waste) please contact your local waste disposal authority.



www.cscindustrial.com
 Ph: 1-866-496-7268
 Fax: 1-915-760-4832
 5970 Silver Springs Dr.
 El Paso, TX 79912

OPTIONAL

1.5750 M 15- 22 - 28mm



1.5765 G 16- 20 - 26mm



1.5740 SV 15- 22 - 28mm



1.5760 U 16- 20 - 25mm



1.5730 TH 16- 20 - 26mm



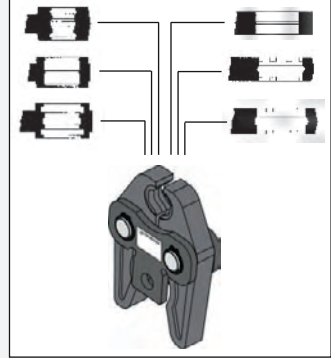
1.5705P Basic



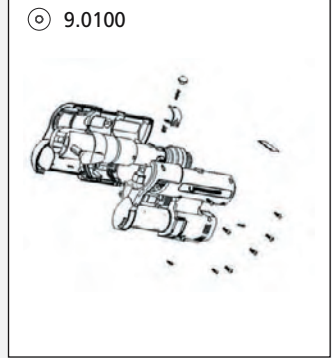
F8.1664



www.rothenberger.com



www.rothenberger.com



CSC Industrial Corporation
www.cscindustrial.com
 Ph: 1-866-496-7268
 Fax: 1-915-760-4832
 5970 Silver Springs Dr.
 El Paso, TX 79912

Zubehör und Ersatzteile/ Accessories and spare parts

Bestellen Sie Ihre Zubehör und Ersatzteile bei Ihrem Fachhändler
 Order your accessories and spare parts from your specialist retailer

	www.cscindustrial.com Ph: 1-866-496-7268 Fax: 1-915-760-4832 5970 Silver Springs Dr. El Paso, TX 79912
	Stempel/Stamp

oder bei unserer Hot – Line After Sales
 or from our after-sales hotline

Tel. +49 6195 995214
 Fax: +49 6195 995215

Kunde / Anschrift Customer / address	
Kunden Nr. / Customer no.	
Bestell Nr. / Order no.	
Ansprechpartner Contact person	
Tel.:	

Ihre Bestellung
 Your order

Artikel Nr. / Article no.	Menge / Quantity	Bezeichnung / Description	Preis / Price



 Datum / Date

 Unterschrift / Signature

NOTES

